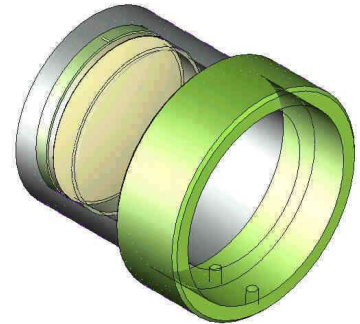


ACCESSORIES

All accessories which affect the optical light path are manufactured with male-female connections: They are fixed into position by means of knurled head screws.

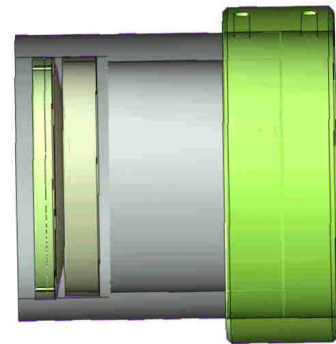
MK 50

Focusing optic: 2 quartz lenses (Spectrosil B.), mounted
 Outside diameter: 70 mmØ
 Length: 59 mm
 Collar diameter: 60 mmØ to fit into condenser sleeve
 Effective aperture: 48 mm
 Focal length: 52 mm



MK 100

Focusing optic: 1 quartz lens (Spectrosil B.), mounted
 Outside diameter: 70Ø mm
 Length: 59 mm
 Collar diameter: 60 mm Ø, to fit into condenser sleeve
 Effective aperture: 48 mm
 Focal length: 100 mm



LQ

Light guide connection for quartz fiber/quartz fiber bundle. The device contains 2 lenses (Spectrosil B) together with a light support with a central hole. The device is adjustable in the condenser support, so that an optimal light input is assured. Outer diameter: 60 mm, to fit in condenser support. Length: 85 mm. Central hole: normally 5 mm Ø (when ordering specify hole diameter 1-15mm)



LG

Light guide connection for glass fiber/glass fiber bundle. The device contains 1 aspheric lens (BK 7) together with a light support with a central hole. The device is adjustable in the condenser support, so that an optimal light input is assured.

Outer diameter: 60 mm, to fit in condenser support
 Length: 85 mm
 Central hole: normally 5 mm Ø (when ordering specify hole diameter 1-15mm)

SOM 20

Matching optic for condensers in LAX lamphouses to the aperture ratio of the monochromator. Consists of image lens and

field lens.
 Lens material: Spectrosil B
 Outside diameter: 70 mm
 Length: 160 mm
 Collar diameter: 60 mmØ, to fit into condenser sleeve

SOM 25

as SOM 20, but for monochromators with aperture ratio f/3.5 and f/4

Length: 240 mm

